

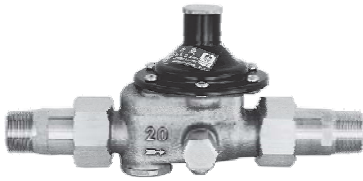
RD-44N Type Pressure Reducing Valve (for Water or Hot Water)

for **Apartments, Hotels, Office Buildings**, etc. Direct operation, general-purpose valve (low noise type)

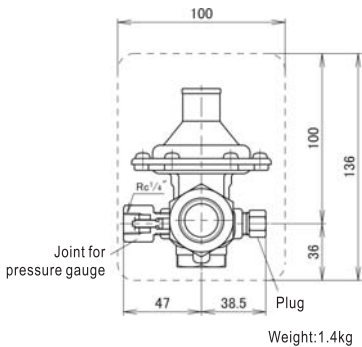
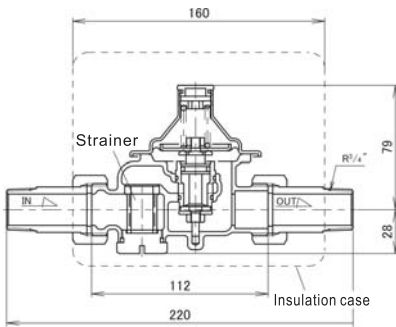
RD-44N type has the basic pressure reducing function of the combination pressure reducing valve series for separate house water supply. It can help improving construction and test efficiency.

Benefits of pressure reducing valve for separate house water supply:

1. Reduce noise of water flow.
2. By installing pressure reducing valve on each floor, it is able to eliminate the difference of water pressure between the floors.
3. Appropriate pressure reduces water jump and water hammer.
4. No influence to other rooms when water supply is cut off for maintenance purpose.
5. Stable mixing temperature and improved housing conditions.



CONSTRUCTION



FEATURES

- Chlorine water resistant rubber for permanent reliability.
- Hygiene structure allows no "dead water".
- Reliable performance at low or high differential pressure conditions.
- Reliable installation, not necessary to disassemble pressure reducing valve.
- Allows water pressure test with valves installed.
- New "test gag" for easy testing.

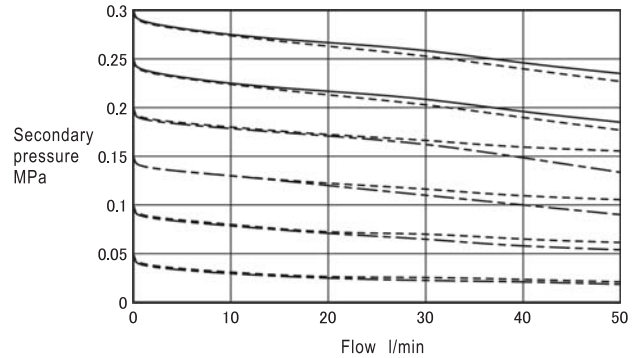
SPECIFICATIONS

Model name	RD-44NLP	RD-44NMP	RD-44NHP
Code name	RD44N-FLPL1	RD44N-FMPL2	RD44N-FHPL3
Applicable fluid	Water & hot water		
Applicable temperature	5~90°C		
Applicable primary pressure	Max. 1.0MPa		
Adjustable secondary pressure	0.05~0.12MPa (Set at 0.08MPa)	0.11~0.23MPa (Set at 0.20MPa)	0.22~0.30MPa (Set at 0.25MPa)
Maximum reducing rate	10:1		
Minimum pressure differential across the disc	0.02MPa		
Rated flow	50 l/min when pressure differential exceeds 0.1MPa		
End connection	Screwed JIS R $\frac{1}{4}$ " union pipe		
Materials	Body(Cast bronze), Diaphragm & disc(Synthetic rubber)		
Valve body pressure test	Hydraulic 1.75MPa ^{*1}		
Installation	In vertical and horizontal pipe line		
Accessory	Union pipe(pipe, nut, gasket), Foam polyethylene case for heat insulation, Test gag(For water pressure test) ^{*2} , Fitting for pressure gauge (It is already installed in the body for secondary side.)		
Strainer	60Mesh		

*1. Use test gag within 1.75MPa at water pressure test.
*2. Pressure gauge is optional item.

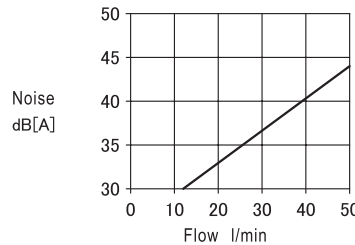
FLOW CHARACTERISTIC

Primary pressure
 — 1.0MPa
 - - - 0.5MPa
 — · — 0.3MPa



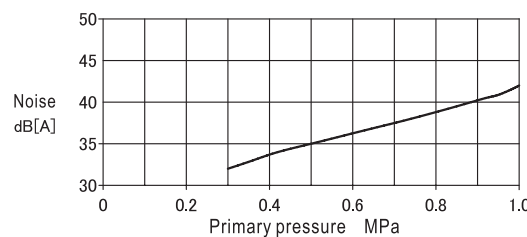
NOISE CHARACTERISTIC

- Noise characteristic when flow changes



Primary pressure 0.6MPa
 Secondary set pressure 0.2MPa
 Background noise 30dB(A)
 Microphone distance 15cm

- Noise characteristic when primary pressure changes



Secondary set pressure 0.2MPa
 Flow 30 l/min
 Microphone distance 15cm
 Background noise 30dB(A)